



AD-Balance Lens

Design Feature

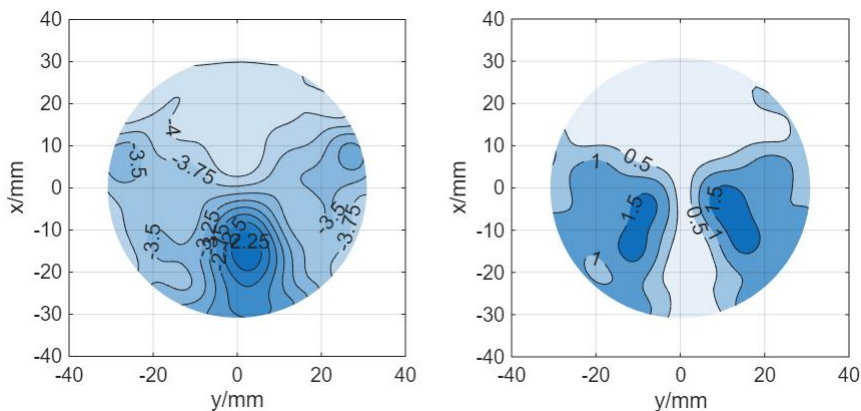
- In order to meet the high demanding visual needs of an active lifestyle, giving the wearer wide clear vision and the utmost comfort for day-to-day activities.
- Enhanced clear and comfortable vision for day to day.
- Excellent balanced view and easy adaptation between zones.

Most Suitable Wearers

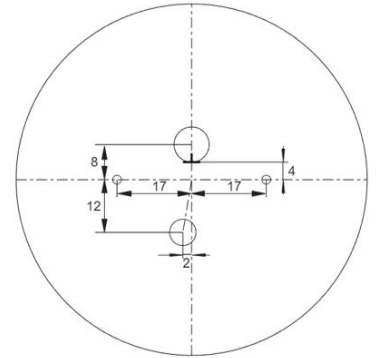
- People with myopia to presbyopia or frequent outdoor activities.
- People who have high-quality demands for relatively wide and comfortable far-use zone, intermediate zone and near-use zone at the same time, to improve the overall clarity and contrast of the effective field of view.

Technical data

➤ Power plot



➤ Fitting diagram



Visual Benefits

- The AD-Balance product adopts aberration weight distribution to ensure a smooth transition between the far and near areas when switching vision.
- Minimize distortion, which can meet the needs of wearing in different scenarios.

Innovative Technologies



Stable-gazing Technology



Seamless Continuous Vision



Ultra Low Distortion



Distortion Index: 62.47

Semi-finished parameters

Base Curve			Back Curve		Semi-Finished CT	Prescription Range	
Nominal	Actual (dpt)	Radius (mm)	Actual (dpt)	Radius (mm)		Sphere power	Cylinders
1.50	1.48D	378.378	6.60	84.848	10.0	-3.25~-6.00	≤-4.00
3.50	3.59D	155.989	6.60	84.848	7.5	-0.00~-3.00	≤-4.00
4.50	4.59D	122.00	6.60	84.848	10.4	+0.25~+3.00	≤-4.00
5.70	6.02D	93.02	6.60	84.848	14.3	+3.25~+5.00	≤-4.00
7.00	8.21D	68.21	6.60	84.848	17.2	+5.25~+8.00	≤-4.00